

# AUDIOLOGIST IMPRESSION GUIDE

1. We require a full impression of each ear that must include the full helix, crus of the helix, tragus and antitragus.

IMPORTANT: The impression MUST be taken completely beyond the second bend of the ear canal.

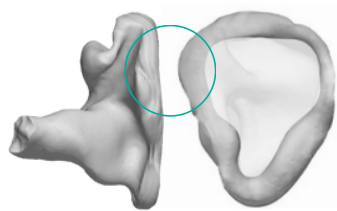
2. We prefer Otoform Green impression material, however we recommend any popular high viscosity materials like the Pink, Yellow, Orange, and Purple material. Please do not use Blue impression material.

3. A 1 to 2 inch bite block is recommended to reduce jaw movement. It is important that the patient's jaw remain still in order to yield a fit with an optimal seal. If patients must wear a mask during the appointment, they may cover their face as required, but DO NOT use the ear loops as they can deform the impression.

4. The following images are meant for reference purposes only. We will not accept impressions that are already pre-trimmed. Impressions must include all listed areas to be usable for custom in-ear monitors.

## EXAMPLES OF GOOD IMPRESSIONS

WE REQUIRE EXTRA MATERIAL OUTSIDE OF THE EAR ABOVE THE TRAGUS



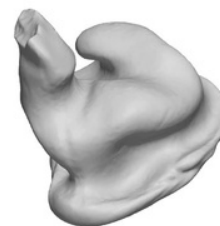
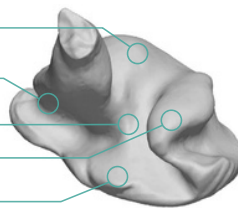
BOWL

TRAGUS

CRUS OF HELIX

CYMBA

EXTRA MATERIAL



CYMBA

2ND BEND

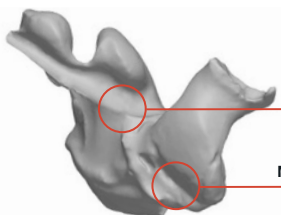
CRUS OF HELIX

BOWL

TRAGIC

NOTCH

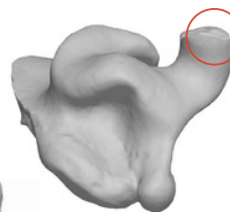
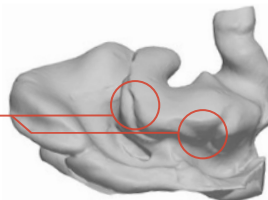
## EXAMPLES OF BAD IMPRESSIONS



MISSING CRUS OF HELIX

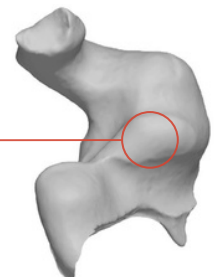
MISSING TRAGUS/TRAGIC NOTCH

MISSING BOWL



CANAL DOESN'T GO PAST 2ND BEND

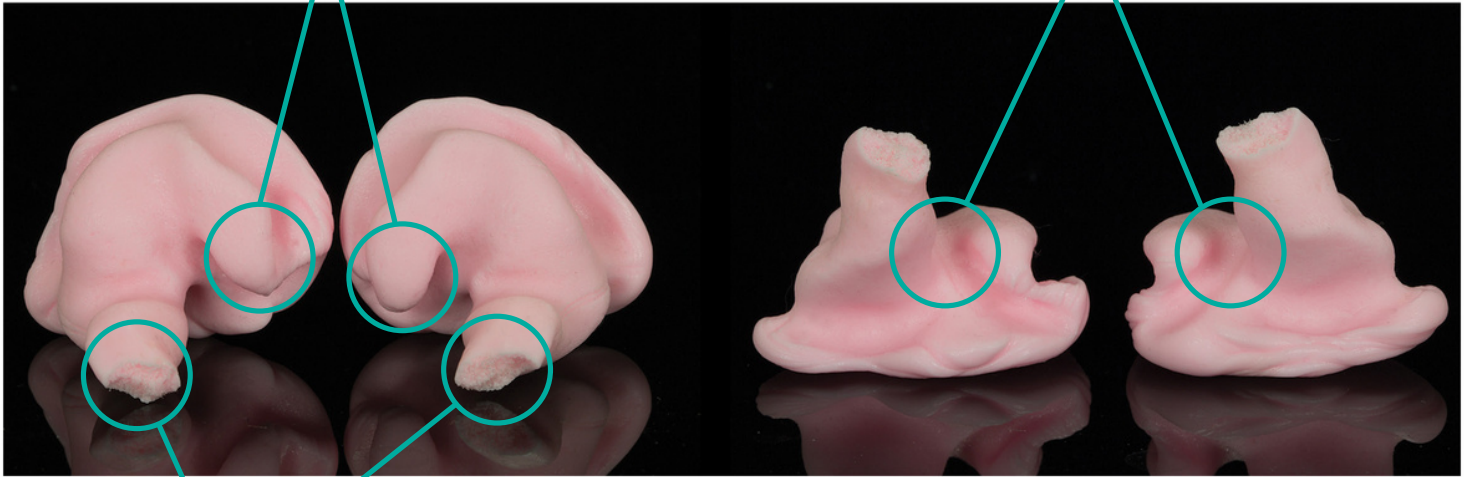
MISSING CYMBA



# IMPRESSION/MOLD DIAGRAM

**CYMBA**

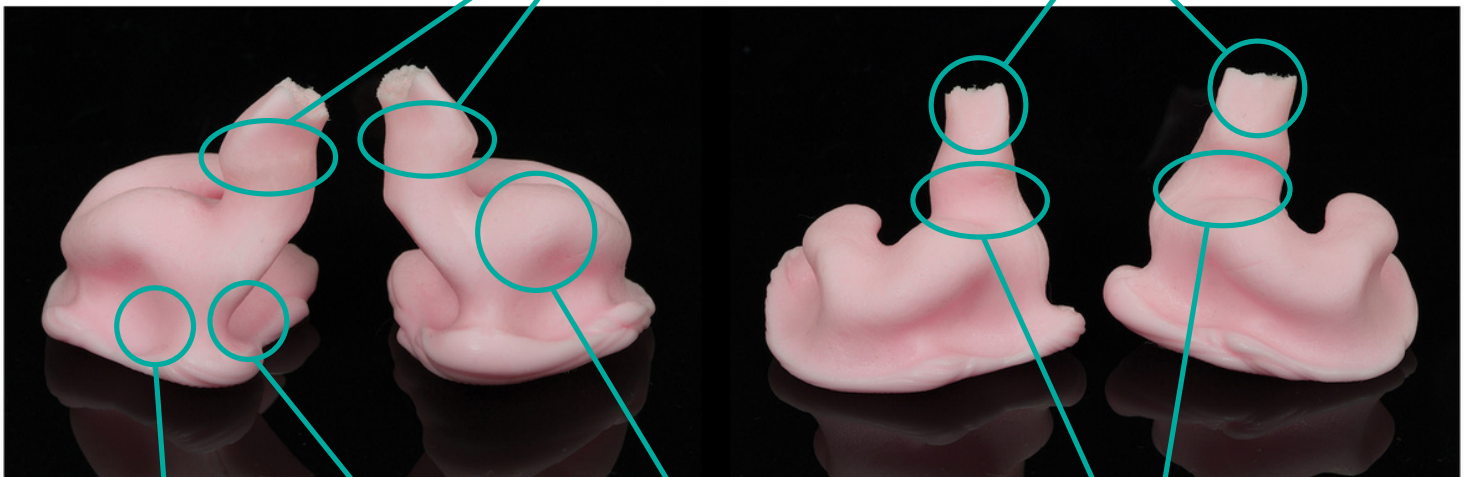
**CRUS OF HELIX**



**CANAL TIP**

**2ND BEND**

**CANAL AREA**



**TRAGUS**

**BOWL**

**APERTURE**

**ANTI-TRAGUS**